



**PT-PR01G-OT**

## Gigabit Outdoor 60W PoE Surge Protector

### Product Overview

PT-PR01G-OT is a single-port PoE surge protector designed for exterior applications with an IP 67 rated Aluminum alloy case. It supports 8 lines network signals and provides surge protection for PoE wires. The maximum common mode surge voltage is 20KV(10/700us) and max differential mode surge voltage is 6KV(10/700us). It supports 10/100/1000Mbps of data rates. It is ideal for PoE wires with IEEE802.3af/at/PoE++ standard and well protects your device against surge damage.

Designed for outdoor use, the PT-PR01G-OT operates from -40℃ to +65℃ in an IP67 enclosure and works with voltage of 44-57Vdc. Equip port should always be connected to device which you want it to be protected.

Both RJ45 ports connect to network over Cat5e/Cat6 cables which is very conveniently and tightly.

It can be easily installed with 2 mounting holes.



### Product Profile

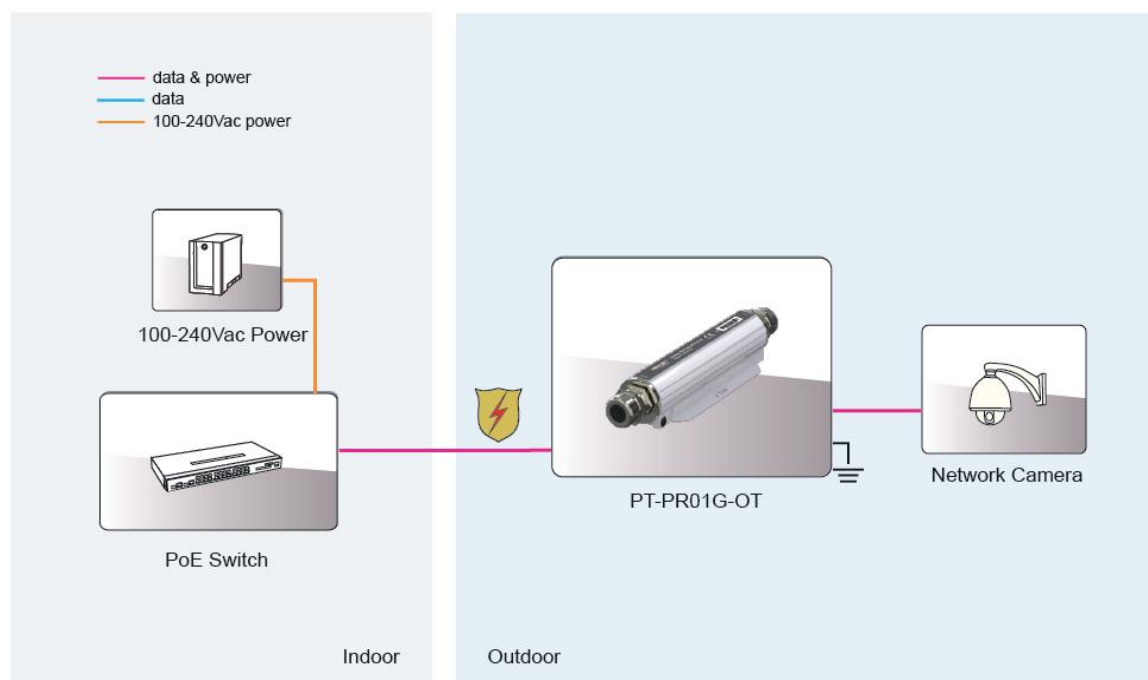


1. Equip: Protected equipment connect to Equip Port
2. Earth



- 3.4. Mounting Hole
5. Line: Lighting Surge Input Port

### Product Working Diagram



## Specification

### Standard

- IEEE802.3 10Base-T Ethernet
- IEEE802.3u 100Base-Tx Fast Ethernet
- IEEE802.3ab 1000Base-T Gigabit Ethernet
- Support PoE wire with IEEE802.3af/at standards
- Support 60W PoE++ standards
- RoHS Compliance
- WEEE Compliance

### Input & Output

- Operating Voltage :44-57Vdc, (Max 60Vdc)
- Maximum Operating DC Current :0.68A for 2 pairs,  
1.36A for 4 pairs,  
maximum 60W
- Power Pins: 4/5(+), 7/8(-) and 3/6(+),1/2(-)
- Data Speed: 10/100/1000Mbps

### Working Environment

- Operating Temperature: -40℃ to 65℃
- Operating Humidity: 20% to 80%, non-condensation
- Storage Temperature: -40℃ to 85℃
- Storage Humidity: 10% to 95%, non-condensation
- Operating Altitude: up to 5000meters

### PoE Surge Protection

- Max Discharge Current: 20KA(8/20us,2.5KA per line)
- Protected Line: 1,2,3,4,5,6,7,8
- Common Mode Protection Level(10/700us): 20KV
- Differential Mode Protection Level(10/700us): 6KV
- Clamping Voltage(Line to GND): 300V
- Clamping Voltage(Line to Line): 10V
- Insertion Loss @10MHz/100MHz: -1db
- Return Loss @10MHz/100MHz: -20db
- Response Time: 5ns

### Mechanical Characteristics

- Case: Aluminium alloy
- Color: White
- Mounting: Wall-mounted
- IP Rated: IP67
- Size: 209mm X 53mm X 37.5mm
- Weight: 380g

### Safety Approvals

- CE

### EMI

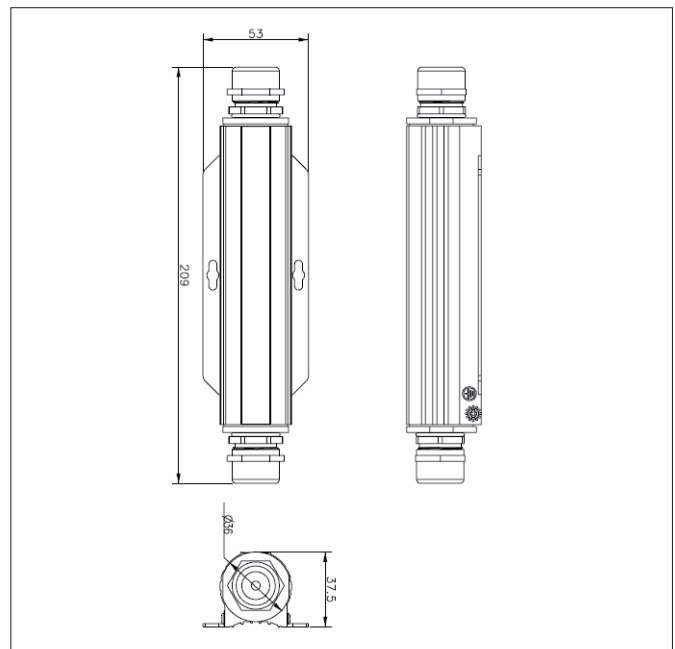
- FCC CFR47 Part 15, EN55024, EN55032

### EMS

- IEC61000-4-2(ESD)  $\pm 6\text{kV}$ (contact),  $\pm 8\text{kV}$ (air)
- IEC61000-4-3(RS) 10V/m(80MHz~2GHz)
- IEC61000-4-4(EFT) Power Port:  $\pm 2\text{kV}$ ; Data Port: $\pm 1\text{kV}$
- IEC61000-4-5(Surge) Power Port: $\pm 1\text{kV/DM}$ ,  $\pm 2\text{kV/CM}$
- IEC61000-4-6(CS) 10V(150kHz~80MHz)

### Immunity

- IEC60068-2-6(Vibration)
- IEC60068-2-27(Impact)
- IEC60068-2-32(Free Fall)



**Order Info:** PT-PR01G-OT 44-57Vdc(Max 60Vdc)/100W/1000Mbps/20KV Surge Protection/IP67/outdoor use

### Packing

PT-PR01G-OT  
Ground lug Wire: 16AWG  
Manual x 1

This document belongs to PROCET company. It is not allowed to reproduce and modify without the original author's permission. It is PROCET's policy to improve its products as new technology, components, software, and firmware at any time. PROCET, therefore, reserves the right to change specifications without prior notice. (2025.05)