

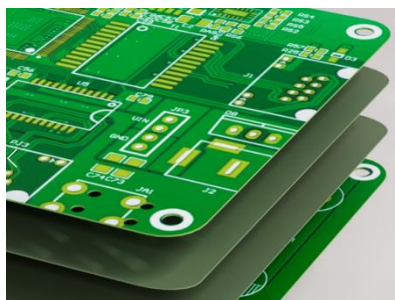
# Industrial 4-Port Din Rail High Power PoE Switch

Procet has a series of Industrial 4-Port Din Rail High Power PoE Switch. They include 1 uplink data port, DC input terminal block and 4 PoE ports, providing 90W each port power for remote PDs over 4 pairs output at 10/100/1000Mbps of data speed. Each PoE port is compliant with BT standard and backward compatible with 802.3af/at. Such as power for Pan Tilt Zoom cameras/IP cameras, VoIP video phones, building/access control equipment, WiFi access devices, POS terminals, thin clients, kiosks, and IP print servers.

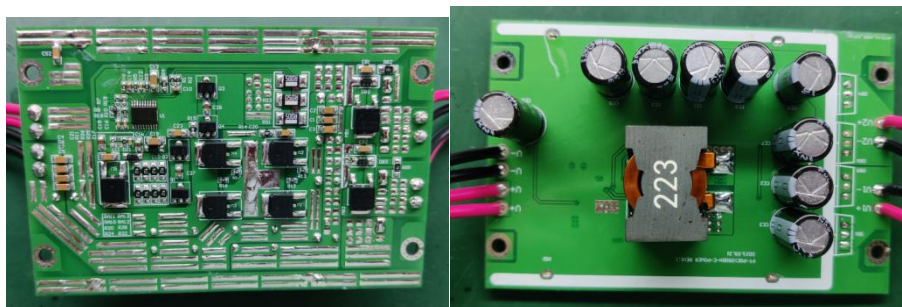
Model	Input	Output	Power Budget	Managed	Uplink
PT-PIS4PB1S-E	12-55Vdc	55Vdc/1.64A per port	90W(Max)*4, total 120W to 360W	N	Fiber
PT-PIS4PB1T-E	12-55Vdc	55Vdc/1.64A per port	90W (Max) *4, total 120W to 360W	N	LAN
PT-PIS4PB1S-E-M	12-55Vdc	55Vdc/1.64A per port	90W(Max)*4, total 120W to 360W	Y	Fiber
PT-PIS4PB1T-E-M	12-55Vdc	55Vdc/1.64A per port	90W(Max)*4, total 120W to 360W	Y	LAN

Please see the design features below.

1. 4 layers PCB board design, good heat dissipation, lower the total PCB board temperature



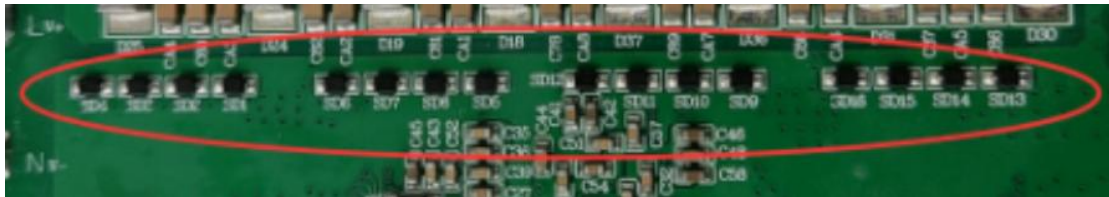
2. Equipped boost voltage mold, supports 12-55 of wide voltage input, can be fed by solar panels power batteries, and automotive batteries system. 55Vdc fixed voltage output reduces power loss effectively, making remote PD within 100 meters(383ft) get enough voltage and power watts.



3. Equipped with Bob-Smith circuit. This PoE switch excels in EMC and EMI metrics, effectively minimizing electromagnetic interference.



4. Anti-Static Protection



5. Using glue pouring technology inside, waterproof, moisture-proof, dust-proof, Insulating, thermal conductivity, corrosion resistant, withstanding high temperature, and shockproof. Especially for good heat dissipation, stability, and reliability.

