



PT-POS401GR-OT

Outdoor 4 Port PoE Switch

Product Overview

PT-POS401GR-OT is an outdoor rated switch special designed for exterior, complex backhaul and networking applications. Enclosed in an IP67 Reflective Aluminum case with a sealing that gasket passes tension, bearing, corrosion, and aging test. Pass salt spray resistance test.

4 ports include 1 LAN port and 3 PoE output ports with 6KV (10/700us) surge protection, each PoE output port provides 55Vdc, 0.55A power for remote PDs at 10/100/1000Mbps of data speed.

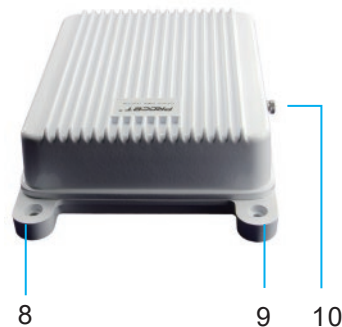
It works with wide input voltage of 100-240Vac and operates under -40 °C to +65 °C. Equipped detecting chip inside, which will detect and classify PD before powering it. It will not provide power until a standard-compliant PD is detected. The effective distance is 100 meters over Cat5e/Cat6 cables.

It is ideal for wireless APs, network camera, VoIP phone, base stations, and other Ethernet power terminals. Easily to install with installation kit (PT-POT-MBK Sold separately). The IP67 housing does not need to be opened and provides a quick, seamless installation.

Product Profile

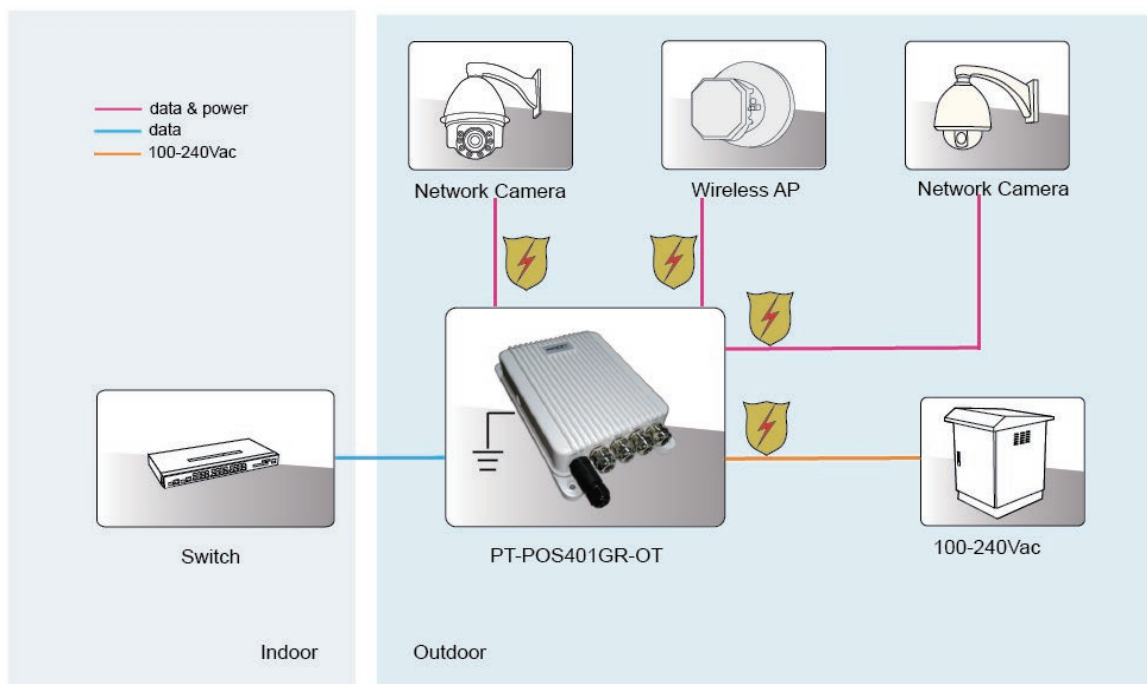


- 1. Mounting Hole
- 2. AC Power Input Port
- 3. Data&Power Output Port
- 4. Data&Power Output Port



- 5. Data&Power Output Port
- 6. LAN: Data Input Port
- 10. Earth
- 7,8,9. Mounting Hole

Product Working Diagram



Specification

Standard

- IEEE802.3 10Base-T Ethernet
- IEEE802.3u 100Base-Tx Fast Ethernet
- IEEE802.3ab 1000Base-T Gigabit Ethernet
- Compliant with IEEE802.3af/at
- RoHS Compliance
- WEEE Compliance

Input & Output

- Input :100-240Vac 2A 50Hz~60Hz
- Output: 55Vdc 550mA (Per Port)
- Power Output Pins: 3/6(+), 1/2(-)
- Data Speed: 10/100/1000Mbps

Working Environment

- Operating Temperature: -40℃ to 65℃
- Operating Humidity: 20% to 90%, non-condensation
- Storage Temperature: -40℃ to 85℃
- Storage Humidity: 10% to 95%, non-condensation
- Operating Altitude: up to 5000meters

AC Surge Protection

- Common mode surge protection(10/700us): 6KV
- Differential mode surge protection (10/700us): 1.5KV

PoE Surge Protection

- Protected line: 1,2,3,4,5,6,7,8
- Common mode surge protection(10/700us): 6KV
- Differential mode surge protection (10/700us): 1.5KV

Mechanical Characteristics

- Case: Aluminum
- Color: White
- Mounting: Wall-mounted/Pole-mounted
- IP Rated: IP67
- Size: 176mm X 269mm X 65mm
- Weight: 1.8kg

Order Info. PT-POS401GR-OT

55Vdc/30W Per Port/1000Mbps/3,6(+), 1,2(-)/Surge Protection/IP67/Active

Packing PT-POS401GR-OT
Manual x 1

Option PT-POT-MBK Outdoor installation Kit

EMI

- FCC CFR47 Part 15, EN55032, EN55035

EMS

- IEC61000-4-2(ESD) ± 4 kV(contact), ± 8 kV(air)
- IEC61000-4-3(RS) 3V/m(80MHz~1000MHz)
- IEC61000-4-4(EFT) Power Port: ± 1 kV; Data Port: ± 0.5 kV
- IEC61000-4-5(Surge) Line to Line: ± 1 kV, Line to Earth: ± 2 kV
- IEC61000-4-6(CS) 3V(0.15MHz~10MHz)

Immunity

- IEC60068-2-6(Vibration)
- IEC60068-2-27(Impact)
- IEC60068-2-32(Free Fall)

