

PT-PGC-AF  
Gigabit PoE to USB-C Adapter

# User Manual



www.procetpoe.com

## Overview

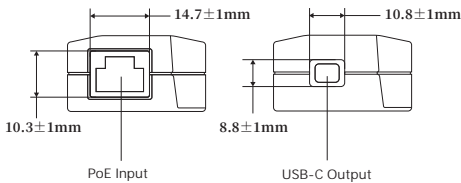
PT-PGC-AF is an indoor PoE to USB-C adapter. It allows power and data obtained from an IEEE802.3af PoE injector or PoE switch to be provided to USB-C PD and network connectivity through the adapter.

PT-PGC-AF features a white plastic housing design, making it portable for on-the-go use or for fixed installations. The device operates within a safe voltage input of up to 57V and provides a power output of 5V/2A and network data at 10/100/1000Mbps. The effective distance for PoE transmission via Cat5e/Cat6 Ethernet cable is 100 meters.

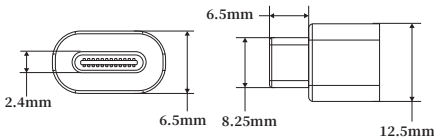
PT-PGC-AF is compatible with most tablets, Android smartphones, and the latest Apple smartphones with USB-C interface. When no PoE power source is fed, it can be regarded as a Gigabit Ethernet converter. That is Ethernet signal can be transmitted through two connected devices.

## Appearance

### • Front View



### • USB-C



1 Product Diagram

## Declaration

Copyright ©2024 Creative Lianjie Network Technology Co.Ltd All rights reserved.

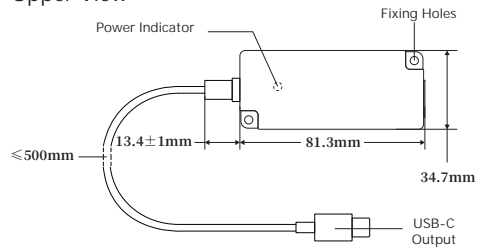
This document belongs to PROCET company. It is not allowed to reproduce and modify without the original author's permission. It is PROCET's policy to improve its products as new technology components, software, and firmware at any time. PROCET, therefore, reserves the right to change specifications without prior notice.

Please follow WEEE (Waste Electrical and Electronic Equipment) disposal instructions for old electronic products. Please do not dispose of the old product in your general household waste bin.

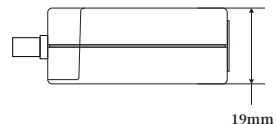


The symbol indicates that the product should not be discarded as unsorted waste but must be sent to separate collection facilities for recovery and recycling.

### • Upper View



### • Side View



2 Dimensions

# Specification

	PT-PGC-AF
Input	40-57Vdc PoE Injector / Switch IEEE802.3af
Power Pins	4/5(+), 7/8(-)or 3/6(+), 1/2(-)or 3/6(-), 1/2(+)
Output	5Vdc 2.0A
Operating Temp.	0°C to 40°C
Operating Altitude	Up to 2000 Meters
USB Standard	USB 3.0
Network Protocol	IEEE802.3i/u/ab
Data Speed	10/100/1000Mbps
Dimensions & NW	(81.3+500)mm X 34.7mm X 19mm ( 51.4g )

## Troubleshooting

Failure Phenomena	Cause Analysis	Solutions
Not working	Poor network cable or network cable failure.	Device Replacement
	Not compatible PSE	PSE Replacement
	PSE Damage or Powered device Damage	PSE or Powered device Replacement
	Not compatible Power Consumption	Pay attention to the Power consumption
Data Transmission Abnormality	Check if the total length of the network connection cable exceeds 100 meters.	Shorten the connection distance, or add an extender/ repeater.
	Signal source malfunction	Check if the switch working properly.
	The data rate cannot reach out 1000Mbps.	The PD should have USB3.0 standard.
	Ethernet data transmission failure	Check if the cable comply with the EIA/ TIA568B or 568A

## Cautions

- 1.This device is for indoor use only.
- 2.For optimal performance of this device, please use Cat 5e or Cat6 cables
- 3.The total Ethernet cable length can not exceed 100 meters.
- 4.Disconnect the USB-C cable from your USB-C device if it does not need power charged. Because prolonged charging may cause your USB-C devices/Tablets to experience battery swelling or a decrease in battery storage capacity.
5. Please use USB 3.0 or higher standard products for connection. Since the practical speed is 35/40MB/s for USB2.0, the practical speed is 300MB/s for USB3.0 , practical speed is 300MB/s for USB3.1 Gen 1, practical speed is 1.2GB/s for USB3.1 Gen 2. Low and high-standard USB-C devices connecting only apply the lower standard speed.
- 6.If this product needs to be installed in a fixed position, please choose a metal plate or wall for installation. Woodenbackboards should not be used to prevent fire hazards.