

## PROCET Outdoor PoE Products Manual



2017.01

Beijing Creative Lianjie Network Technology Co., Ltd.

[www.procet.cn](http://www.procet.cn)

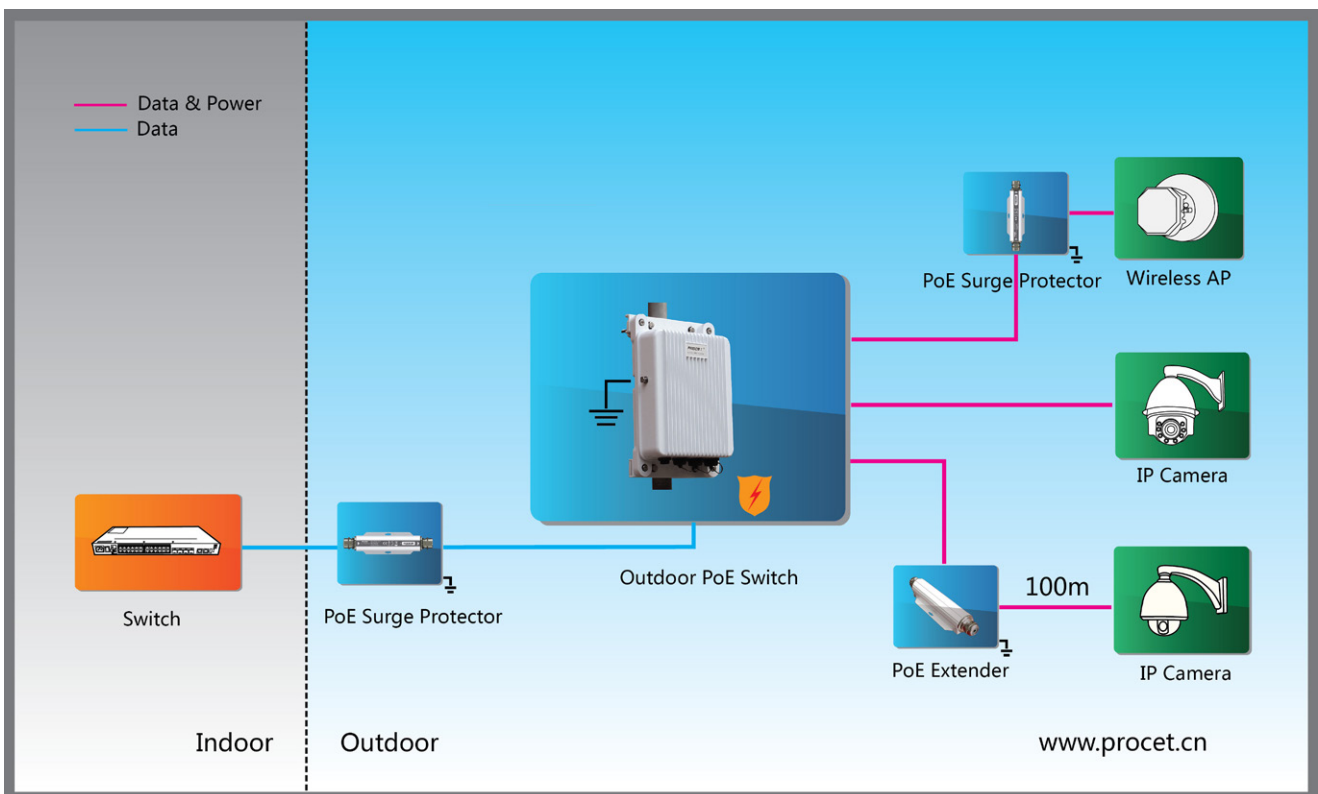


## Introduction

PT-PSE108GR-OT, one of the outdoor PoE products series. These series of products coming from PROCET company research and development, through market and customer demands, divided into PoE Midspan and PoE switch two categories, special designed for outdoor environment, which can work stable at long time, industrial level, wide temperature, humidity, dust, salt fog and other adverse environmental conditions, in order to supply stable, reliable and convenient power for outdoor work AP, cameras etc.

PROCET outdoor PoE products design goal is to become the outdoor power supply standard parts, when users meet the outdoor power supply environment, after get the PoE power supply, without professional configuration and special tools, would complete the installation work well, make sure installation simple, convenient and reliable.

## Application Diagram

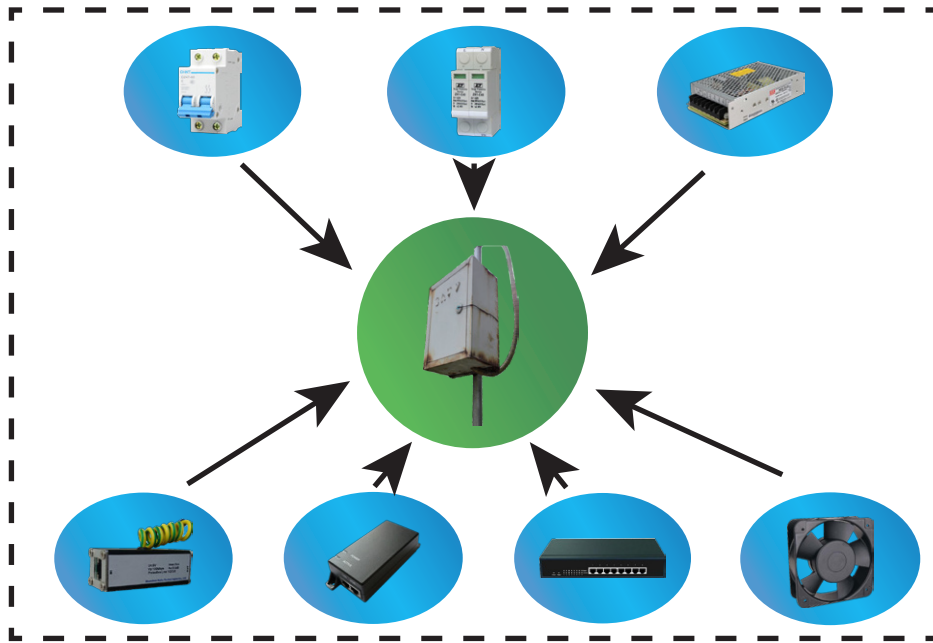


## Solution

The traditional scene for outdoor camera, AP power supplying, basically use the mode of distribution box installation, as shown below, the data and power enter into the distribution box, after all the equipment processing, finally lead to outdoor terminal equipment.

PROCET, according to the distribution box assembly complicated, spare parts quality, long running unstable, etc, carry on the fundamental innovation on setting. outdoor PoE products designed for outdoor environment, integrated of the various functions of the distribution box equipment, based on wide temperature, high protection design level, which have passed TUV, UL certification, with convenient installation at field, stable and reliable to use.

Traditional outdoor PoE power supply system :



PROCET outdoor PoE product :



PROCET outdoor PoE product features :



Products information



PT-PSE108GR-OT

30W Outdoor PoE Midspan

PT-PSE108GR-OT, an outdoor using high power PoE injector, 6KV(10/700us) surge protection on AC, LAN, PoE ports, protection level IP67, operation temperature -40°C-65°C. Its output 55VDC, 1.73A. Especially for harsh outdoor conditions.

- 6KV(10/700us) surge protection on AC, LAN , PoE ports
- Data rate:10/100/1000M
- Operation temperature: -40°C-65°C
- Metal shell, protection level IP67
- No need to open unit when install
- Supporting IEEE802.3af and IEEE802.3at standard terminal devices



PT-POS401GR-OT-FH

30W Outdoor 4 Port powered PoE Switch

PT-POS401GR-OT-FH, an outdoor using PoE switch, 6KV(10/700us) surge protection on AC, LAN , PoE ports, protection level IP67, operation temperature -40°C-65°C. Output 55VDC, 30W per port. Especially for harsh outdoor conditions.

- 1 PoE input port, 3 PoE output port
- 6KV(10/700us) surge protection on AC, LAN, PoE ports
- Metal shell, protection level IP67
- No need to open unit when install
- Supporting IEEE802.3af and IEEE802.3at standard terminal devices



PT-POS401GRF-OT

4 Port Outdoor SFP PoE Switch

PT-POS401GRF-OT, an outdoor SFP PoE switch, output 55VDC, 30W each port. 6KV(10/700us) surge protection on AC, LAN , PoE ports, protection level IP67, and operation temperature -40°C-65°C. Output 55VDC, 30W per port. Especially for harsh outdoor conditions.

- 3 PoE output port, 1 SFP output port
- 6KV(10/700us) surge protection on AC, LAN, PoE ports
- Operation temperature: 40°C-65°C
- Metal shell, protection level IP67
- No need to open unit when install
- Supporting IEEE802.3af and IEEE802.3at standard terminal device



PT-POS401GR-OT

30W Outdoor 4 Port Powered PoE Switch

PT-POS401GR-OT,an outdoor high power PoE Switch with surge protection, 1 PoE input port and 3 PoE output ports,each PoE output port would supply 55VDC, 30W per port.8 lines net signals protection and PoE 6KV(10/700us) surge protection, IP67 metal shell support wide temperature -40°C-65°C ,100/1000M data rate.Especially for harsh outdoor conditions.

- 1 PoE input port, 3 PoE output ports
- 6KV(10/700us) surge protection
- Metal shell, protection level IP67
- No need to open unit when install
- Supporting IEEE802.3af and IEEE802.3at standard terminal device

60W Outdoor PoE Midspan

PT-PSE108GRW-OT, an outdoor using high power PoE injector, 6KV(10/700us) surge protection on AC, LAN, PoE ports, protection level IP67, operation temperature -40°C-65°C. Its output 55VDC, 1.1A,totally output 60W. Especially for harsh outdoor conditions.

- 6KV(10/700us) surge protection on AC, LAN , PoE ports
- Operation temperature: -40°C-65°C
- Metal shell, protection level IP67
- No need to open unit when install
- Supporting IEEE802.3af and IEEE802.3at standard terminal devices



PT-PSE108GRW-OT

## Products information



PT-PSE208GRW-OT

### 60W Outdoor 2 Port PoE Midspan

PT-PSE208GRW-OT is an outdoor, 2 ports, high power PoE midspan. The 2 PoE ports support Camera and AP device at the same time, data can be communicated from the AP to remote device. With 8 lines and PoE 6KV(10/700us) surge protection, the product output 55VDC, 30W, waterproof metal shell, working range is -40 C -65 C, work well in harsh outdoor conditions.

- 6KV(10/700us) surge protection on AC, LAN, PoE ports
- Operation temperature: -40 C -65 C
- Metal shell, protection level IP67
- No need to open unit when install
- Supporting IEEE802.3af and IEEE802.3at standard terminal devices



PT-PSE108GBR-OT

### 95W Outdoor PoE Midspan

PT-PSE108GBR-OT, an outdoor using high power PoE injector, 6KV(10/700us) surge protection on AC, LAN, PoE ports, protection level IP67, operation temperature -40 C -65 C. Its output 55VDC, 1.73A. Especially for harsh outdoor conditions.

- 6KV(10/700us) surge protection on AC, LAN, PoE ports
- Data rates: 100/1000M
- Operation temperature: -40 C -65 C
- Metal shell, protection level IP67
- No need to open unit when install
- Supporting IEEE802.3af and IEEE802.3at standard terminal devices



PT-PR01G-OT

### Outdoor PoE Surge Protector

PT-PR01G-OT is an outdoor single port surge protector, with 1 input port and 1 output port, supporting 8 lines net signals and PoE supply surge protection, providing independent protection for one whole PoE wire. The differential mode surge voltage is 4KV(8/20us) and common mode surge voltage is 6KV(8/20us).

- Connector Type: RJ45
- Operating Voltage: 44-57VDC
- Providing 8 lines protection
- Compliant with 95W PoE++ standards
- 2 install holes, convenient to mount
- Outdoor 1 Port, Indoor 1/2/4 Ports can be chosen



PT-PEX-01G-OT

### Outdoor Single-Port PoE Extender

PT-PEX-01G-OT is an outdoor application, single-port PoE extender, power for 30W and extend for 100m. From cascade connection, the extending distance can reach up to 400m, supporting 8 lines net signals and PoE surge protection 6KV(10/700us), convenient to use in outdoor environment.

Support the terminal devices compliant with IEEE802.3af/at standards, provide power for wireless AP, Camera, etc.

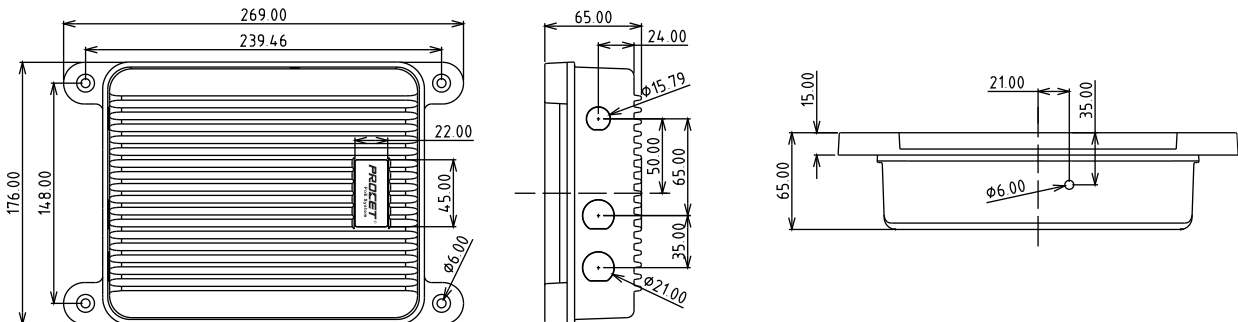
- Input/Output voltage : 44-57VDC
- Metal shell, Protection level: IP67
- Extending distance: 100m
- No need more power else, plug and play, without configuration

Products selection

Power per port	Model	Port Number	1000M	Type (Active)	Input Voltage	Temperature (-40-65℃)	AC Surge (6KV)	PoE Surge (6KV)	Others
30W	PT-PSE108GR-OT	1	x	x	AC	x	x	x	PoE Midspan
30W	PT-POS401GR-OT-FH	4	x	x	AC	x	x	x	PoE Switch
30W	PT-POS401GRF-OT	4	x	x	AC	x	x	x	PoE Switch
30W	PT-POS401GR-OT	4	x	x	AC	x	x	x	PoE Switch
60W	PT-PSE108GRW-OT	1	x	x	AC	x	x	x	PoE Midspan
60W	PT-PSE208GRW-OT	2	x	x	AC	x	x	x	PoE Midspan
60W	PT-PSE108GRW-OT-DC	1	x	x	DC	x	x	x	PoE Midspan
95W	PT-PSE108GBR-OT	1	x	x	AC	x	x	x	PoE Midspan

Product Type	Model	Port Number	1000M	Outdoor Application	Output (Watt)	Temperature (-40-65℃)	Metal Shell	PoE Surge (6KV)	Others
PoE Extender	PT-PEX-01G-OT	1	x	x	30W	x	x	x	100m
PoE Surge	PT-PR01G-OT	1	x	x	95W	x	x	x	8 lines

Outline drawing (Unit:mm)

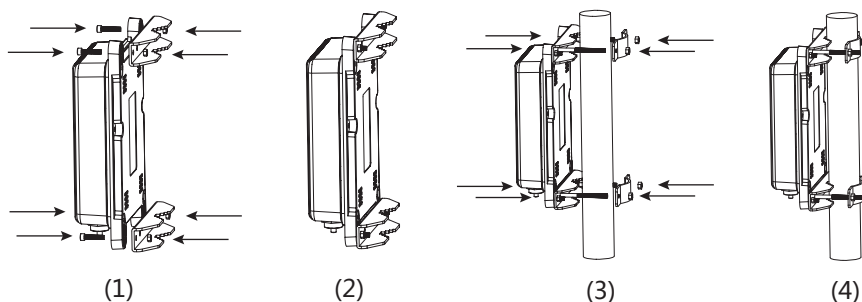


Installation method

There are 2 ways to mount PROCET outdoor products:

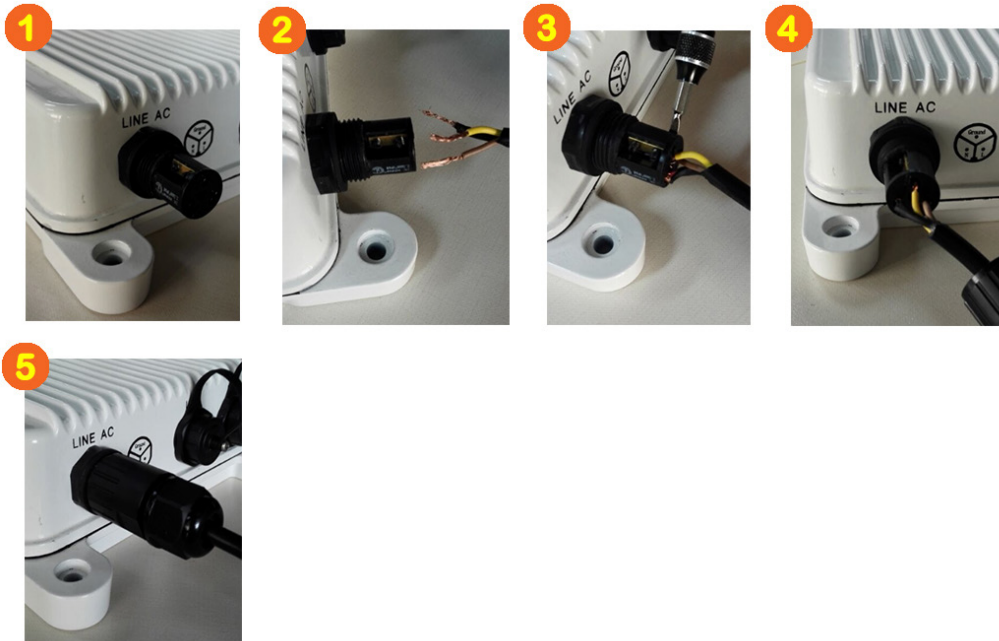
1. According to the position of the 4 fixing holes of the product, punch holes on the plane wall, and then fix the product on the plane wall.
2. Use the product attached the installation accessories, the device can be fixed on the pole. As follows:

Installation steps for the pole

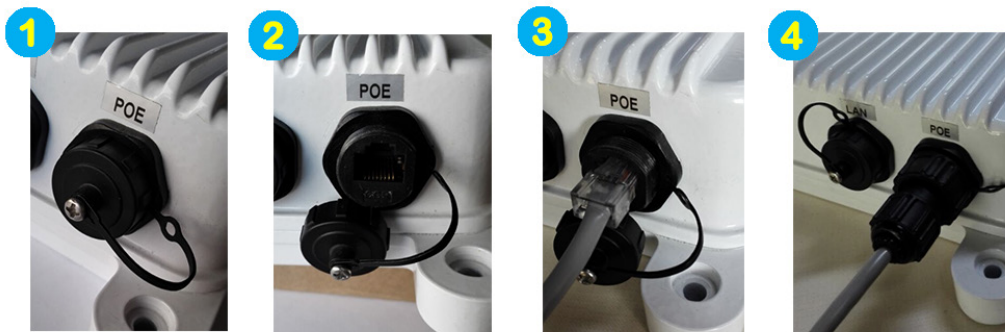




## AC port installation steps



## RJ45 port installation steps



## SFP fiber port installation steps

