

Creative Lianjie Network Technology Co., Ltd

Your PoE and Network Lightning-Protection Solution Provider

CONTENTS



1

Introduction

2

Production

3

Products

4

Development



Company Introduction

1.1 Introduction

1.2 Address

1.3 Solutions

1.4 Calendar

1.5 Structure/Staffing

We, Creative Lianjie Network Technology Co., Ltd, established in Zhongguancun science park in September 2000.

We focus on R&D PoE product since 2003. Now we are developed as the professional PoE and lightning protection solution provider.

Our company passed ISO9001 in 2010. Our produce dept., R&D dept., and purchase dept. moved to Dongguan in 2011.

Now we have extensive product line for the products. Single-port PoE, multi-port PoE, lightning-PoE, indoor PoE, outdoor PoE, DC PoE, Wide-temperature PoE, etc.

All the PoE designed base on CE/FCC/CCC requirements, part type past cUL/UL, SAA, PSE, BIS, KCC.



Beijing Office

Add: No.2228, XianFeng Building, Shangdi Kaituo Rd No. 7, Haidian District, 100083, Beijing, China

Phone : + 86 010-82873031

Fax : + 86 010-62693031

Email : sales@procet.cn

Web : www.poesystem.com

www.procet.cn

Manufactory

Add : G2 Jin Xiongda Techno-pack, Daling Mountain Town, Dongguan, 523820 Guangdong, China

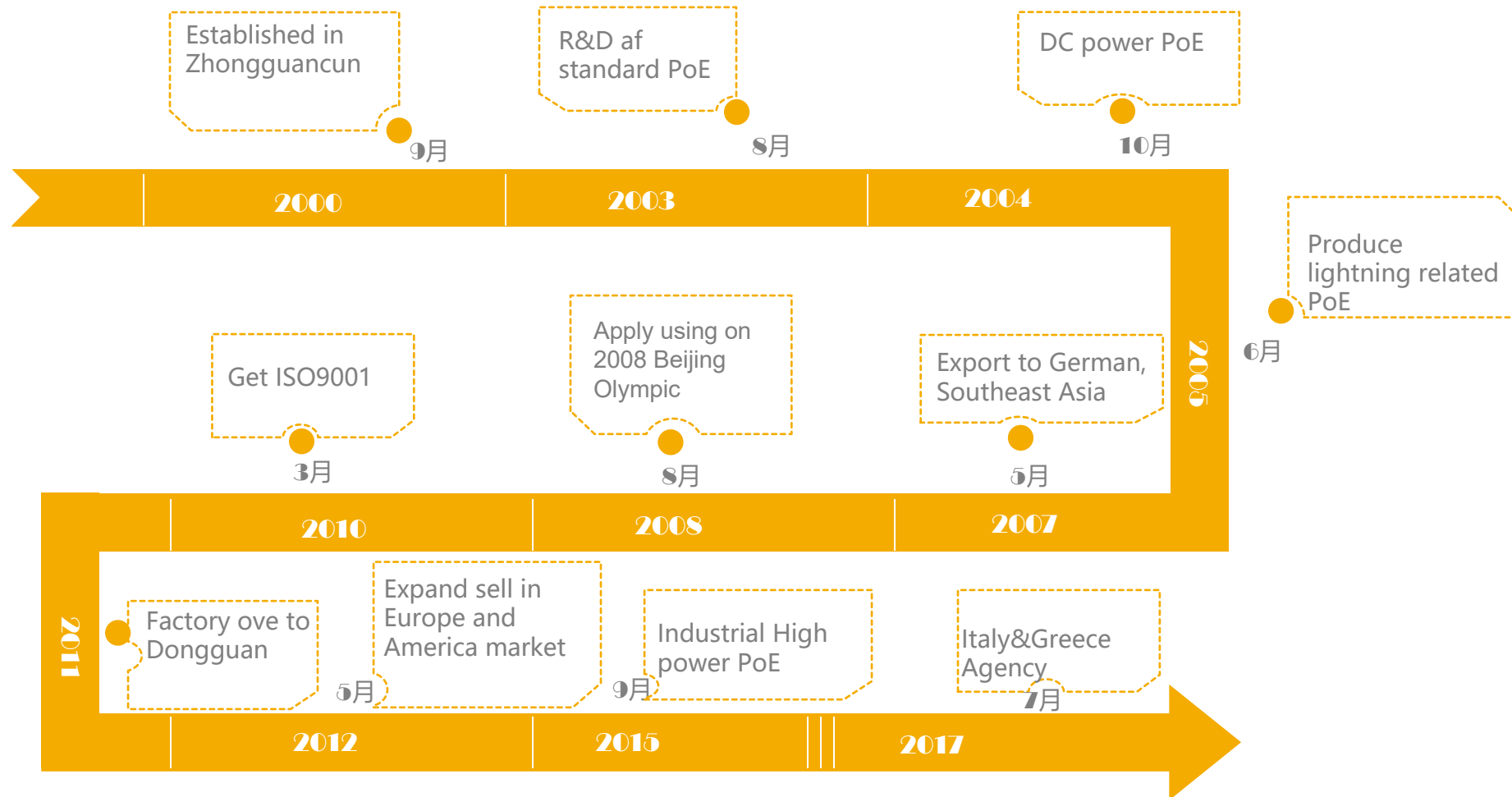
Phone : 86 0769-83858985

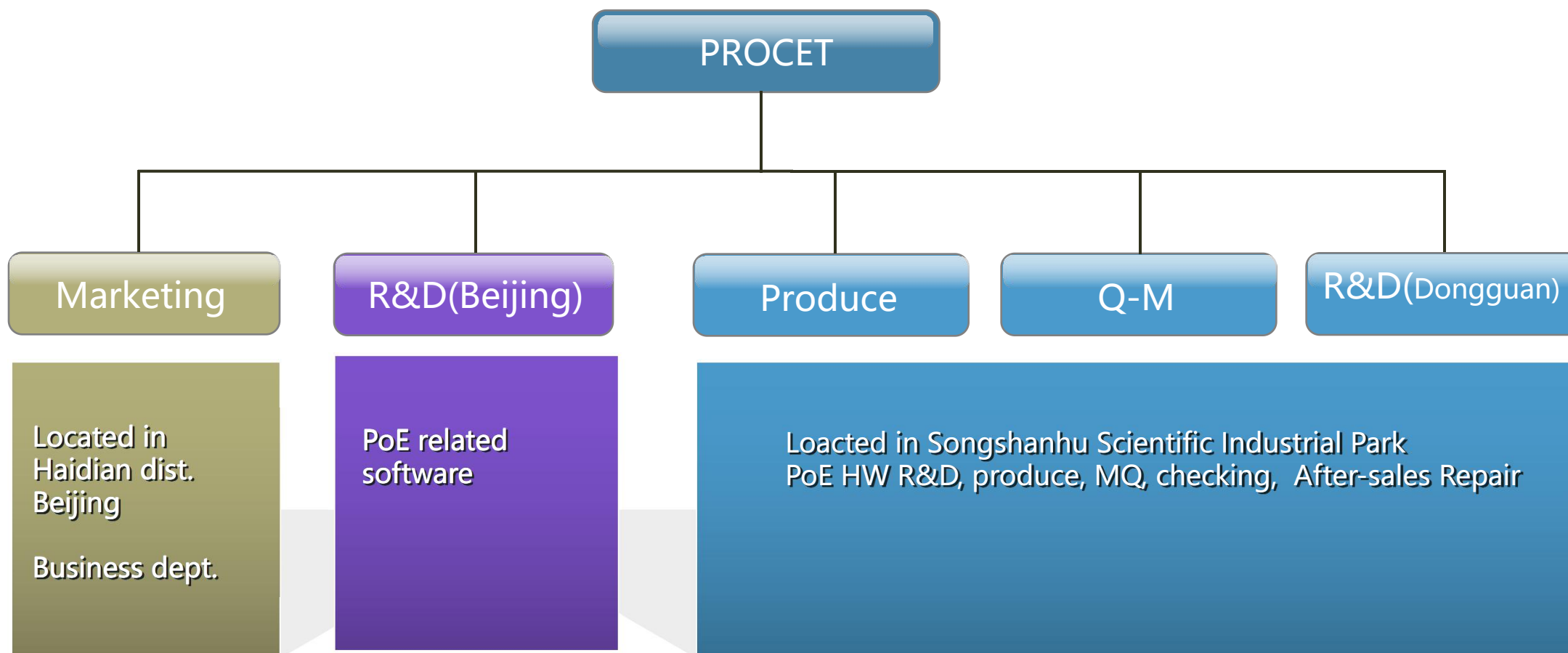
Fax : 86 0769-83858986

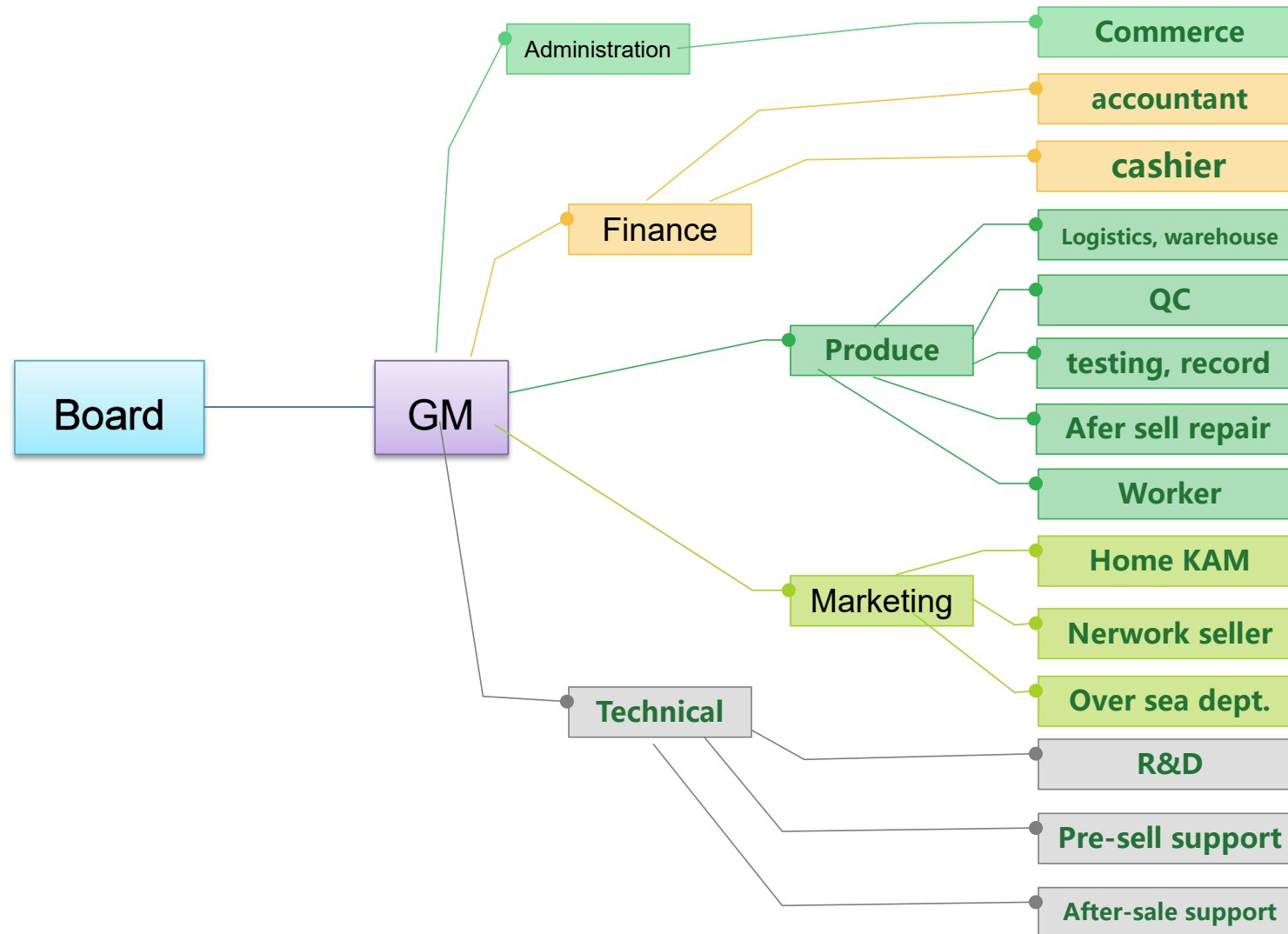


- Communication Base Station
- Factory Communication
- Shopping Malls
- Video Surveillance

1.4 Calendar







Staffing

Total: 68
Manager: 23
Labor: 45



Production

- 2.1 Standard factory
- 2.2 Certifications
- 2.3 Quality Management
- 2.4 Key Process
- 2.5 Company Management

2.1.1 Standard Factory-- Environment



Loacted in Songshanhu Scientific
Industrial Park
G2 Jinxiongda Park



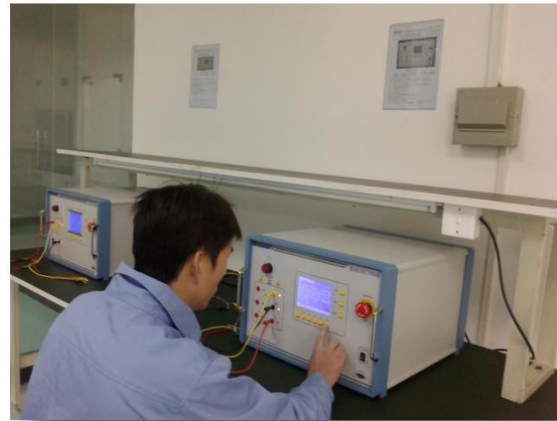
Production



- Standard Production Line
- 5S Management



2.1.3 Standard Factory-- Testing Device



- Producing device
- Testing device



Production

2.1.4 Standard Factory-- Lab Testing Devices

Number	Name of equipment	Number	Name of equipment
PT-YQ001	Lightning surge generator	PT-YQ022	Programmable electronic load device
PT-YQ002	Lightning surge generator	PT-YQ025	LCR bridge tester
PT-YQ003	Electrostatic discharge generator	PT-YQ027	High voltage tester
PT-YQ004	Double drop test machine	PT-YQ029	Variable frequency power supply
PT-YQ005	Horizontal/vertical vibration test Operating instructions	PT-YQ032	Brainpower electric quantity tester
PT-YQ006	Six groups of swing test machine	PT-YQ034	DC regulated power supply
PT-YQ007	Salt spray test machine	PT-YQ036	Digital torque machine
PT-YQ008	Constant temperature and humidity test machine	PT-YQ039	Data acquisition unit
PT-YQ016	Six Channel PoE Test Instrument	PT-YQ040	Digital multimeter
PT-YQ021	Digital storage oscilloscope	PT-YQ041	SMARTBITS 6000B

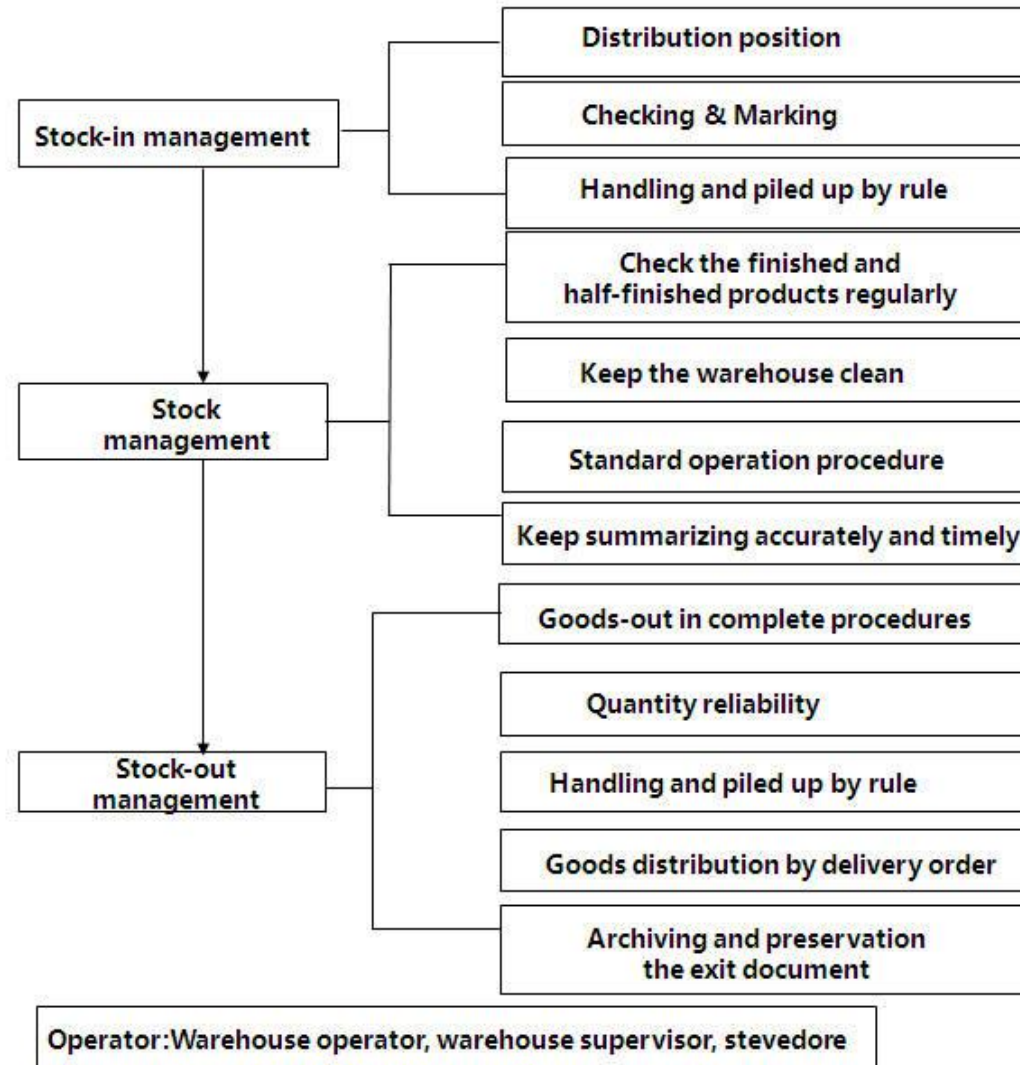
2.1.5 Standard Factory-- Warehouse Mangement

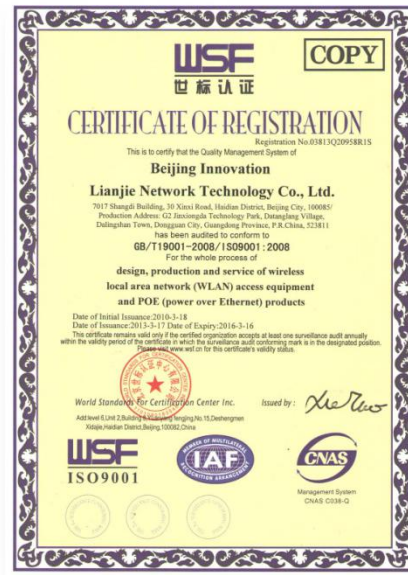


- Sophisticated Management



2.1.5 Standard Factory-- Warehouse Mangement





- 2010 past the ISO9001
- ISO14001 Environment Management System Certification
- OHSAS18001 Occupational Health&Safety Management System Certification

2.2.2 Certification--CE/FCC/UL/3C

		Ref. Certif. No. DK-58917-UL
IEC SYSTEM FOR MUTUAL RECOGNITION OF TEST CERTIFICATES FOR ELECTRICAL EQUIPMENT (VECE) CB SCHEME SYSTEME CEI D'ACCEPTATION MUTUELLE DE CERTIFICATS D'ESSAIS DES EQUIPEMENTS ELECTRIQUES (VECEE) METHODE CC		
CB TEST CERTIFICATE		
Product: Name and address of the applicant: Name and address of the manufacturer: Name and address of the factory: Ratings and principal characteristics: Trademark (if any): Type of Manufacturer's Testing Laboratories used: Model / Type Ref. Additional information (if necessary may also be reported on page 2): A sample of the product was tested and found to be in conformity with the certificate of test report. As shown in the Test Report Ref. No. which forms part of this Certificate. This CB Test Certificate is issued by the National Certification Body.	CERTIFICAT D'ESSAI CC Product: Name and address of the applicant: Name and address of the manufacturer: Name and address of the factory: Ratings and principal characteristics: Trademark (if any): Type of Manufacturer's Testing Laboratories used: Model / Type Ref. Additional information (if necessary may also be reported on page 2): A sample of the product was tested and found to be in conformity with the certificate of test report. As shown in the Test Report Ref. No. which forms part of this Certificate. This CB Test Certificate is issued by the National Certification Body.	
Date: 2016-10-26 Signature: <i>Jan-Erik Dorgard</i> Jan-Erik Dorgard		

CERTIFICATE FOR CHINA COMPULSORY PRODUCT CERTIFICATION No. : 2017010907950515 NAME AND ADDRESS OF THE APPLICANT: NAME AND ADDRESS OF THE MANUFACTURER: NAME AND ADDRESS OF THE FACTORY: NAME, MODEL AND SPECIFICATION: THE STANDARDS AND TECHNICAL REQUIREMENTS FOR THE PRODUCTS: Date of issue: Mar. 27, 2017 Date of expiry: Mar. 14, 2022 Validity of this certificate is subject to positive result of the regular follow up inspection by issuing certification body until the expiry date. This certificate can be verified through CCA's website: www.cca.gov.cn	
President: <i>Wang Kejiao</i> CHINA QUALITY CERTIFICATION CENTRE Section F.No.188, Nanshuan Xilu, Beijing 100070 P.R.China http://www.cqc.com.cn Q 1651720	

DECLARATION OF CONFORMITY This Verification of Compliance is hereby issued to the product designated below: Holder of Certificate: Beijing Creative LianJie Network Technology Co., Ltd. Product: PoE INJECTOR Identification: PT-PSE108GR-OT, PT-PSE108GR-OT-N, PT-PSE108GR-OT-24-N, PT-PSE208GRW-OT-N, PT-PSE208GRW-OT, PT-PSE208GRW-OT-24-N, PT-PSE208GRW-OT-24-N Rated input: 100-240V~, 1.5A, 50/60Hz Rated output: See model list on page 5/6 Protection Class: Class I Tested according to: EN 60950-1:2006+A11:2009+A12:2011+A2:2013 This certificate of conformity is based on evaluation of a sample of the above mentioned product. Technical report and documentation are at the Licence Holder's disposal. This is to certify that the tested sample is in conformity with Annex 1 of Council Directive 2014/53/EU, referred to as the Low Voltage Directive. This certificate does not imply assessment of the series-production of the product. The holder of the certificate is authorized to use this certificate in connection with the EC declaration of conformity according to Annex IV of the Directive. DongGuan ShuoXin Electronic Technology Co., Ltd. (CRTL Lab of UL International Centre) Tel: 86-755-8501 8000; email: info@shuoxin.com Fax: 86-755-8501 8777; http://www.shuoxin.com Date of issue: 01/05/2017 (mm/dd/yyyy) The CE Marking may be used if all relevant and effective EC Directives are complied with.	
Certification Body: <i>Maoying Wang</i> Signature: Mr. Maoying Wang (Manager)	

Verification of Conformity Registrations No. 16FAS11056 1225 Report No. 16FAS11056 21 Responsible Party: Beijing Creative LianJie Network Technology Co., Ltd. Product: PoE INJECTOR Model(s): PT-PSE108GR-OT, PT-PSE108GR-OT-N, PT-PSE108GR-OT-24-N, PT-PSE208GRW-OT, PT-PSE208GRW-OT-N, PT-PSE208GRW-OT-24-N Rated input: 100-240V~, 1.5A, 50/60Hz Rated output: 55Vdc, 1.1A/24Vdc, 1.0A Tested according to: FCC Part 15 Subpart B:2016 This device is in conformity with part 15 of the FCC Rules and Regulations for information Technology Equipment. Operation of this product is subject to the following two conditions: 1: This device may not cause harmful interference. 2: This device must accept any interference received, including interference that may cause undesired operation. DongGuan ShuoXin Electronic Technology Co., Ltd. (CRTL Lab of UL International Centre) Tel: 86-755-8501 8000; email: info@shuoxin.com Fax: 86-755-8501 8777; http://www.shuoxin.com Date of issue: 12/15/2016 (mm/dd/yyyy)	
Certification Body: <i>Maoying Wang</i> Signature: Mr. Maoying Wang (Manager)	

- UL, CE, FCC, PSE, SAA, CCC, KCC

Production

2015-2018, PROCET focus on the quality management post setting conditions, such as IQC、IPQC、FQC、OQC、SQE、CQE etc.

SQE: checked at product regular

IQC: Raw material check appearance/size/spec

IPQC: Process quality control

FQC: Finished product inspection

OQC: Outgoing Quality Control check packing

PQE: Product Quality Engineer

QS: Quality Safety

DCC: Document Management

CQE/CS: Customer Complaint

MS: Measurements



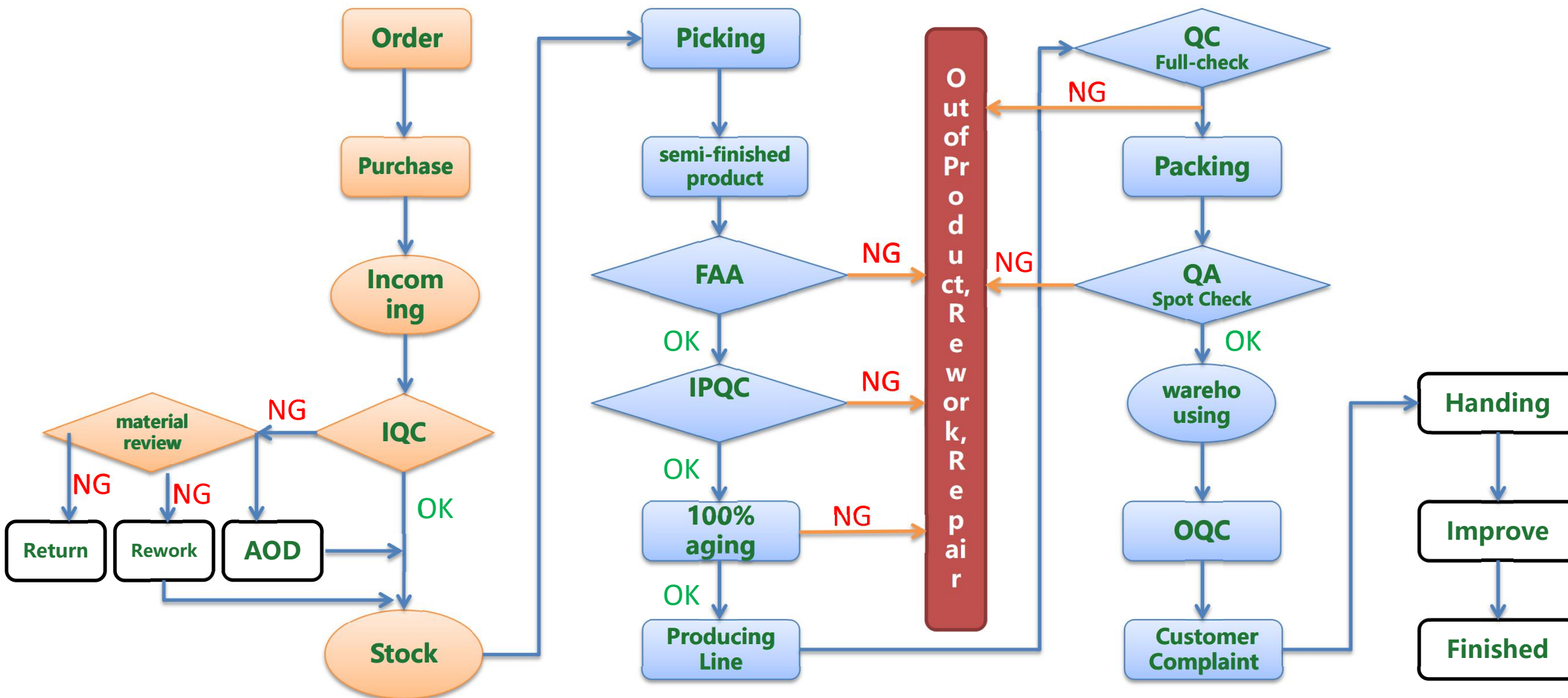
2015-2017 Quality Goal design, decomposition, achievement:
products passing rate of 99%, customer satisfaction 98%.
Past ISO9001: 2010

Improvement:

1. Monitoring and measurement of produce
2. Produce equipment management
3. Optimize Product processing, enhance Implementation Strength
4. Labeled product management
5. Quality system training and skills training



2.3.3 Quality Management -flow diagram



Production

First, Original Manufacturer Management

1. Regular inspection audit per year
2. Visiting per year
3. Certification Checking
4. At least 2 suppliers per material

Secondly, Agency Management

1. Check the agent qualification timely
2. Check original supplier half an year

Third, Key supplier certification

1. Supplier file management
2. Supplier qualification audit
3. Supplier on-site inspection regularly

Fourthly, Key supplier performance appraisal

1. Class the supplier base on performance appraisal, IQC, quality tracking
2. Supplier rating timely

2015-2017 Company produce control

1. Make production plan base on sales plan
2. Make MRP(Material requirements plan) base on production plan
3. Calculate the productive capacity base on production plan and MRP
4. Release Production Orders
5. Control the order finish condition, timely keep the client informed about the order condition

Key process control:

Quality department make the key operation instructions, including the process parameter, key control point, the monitoring frequency, the objective criteria



Staff is the main asset of a company, regular training is to increase the asset

Training is the stepped, planned intervention behavior for improving the staff practical work ability.

We have the orientation training plan for new staff, and the regular training for older staff, also the promotion production

Safety production:

Protection manual & Protective clothing every staff

Regular study and testing

Daily education, Three-level education, Four new education, job transfer, return job training



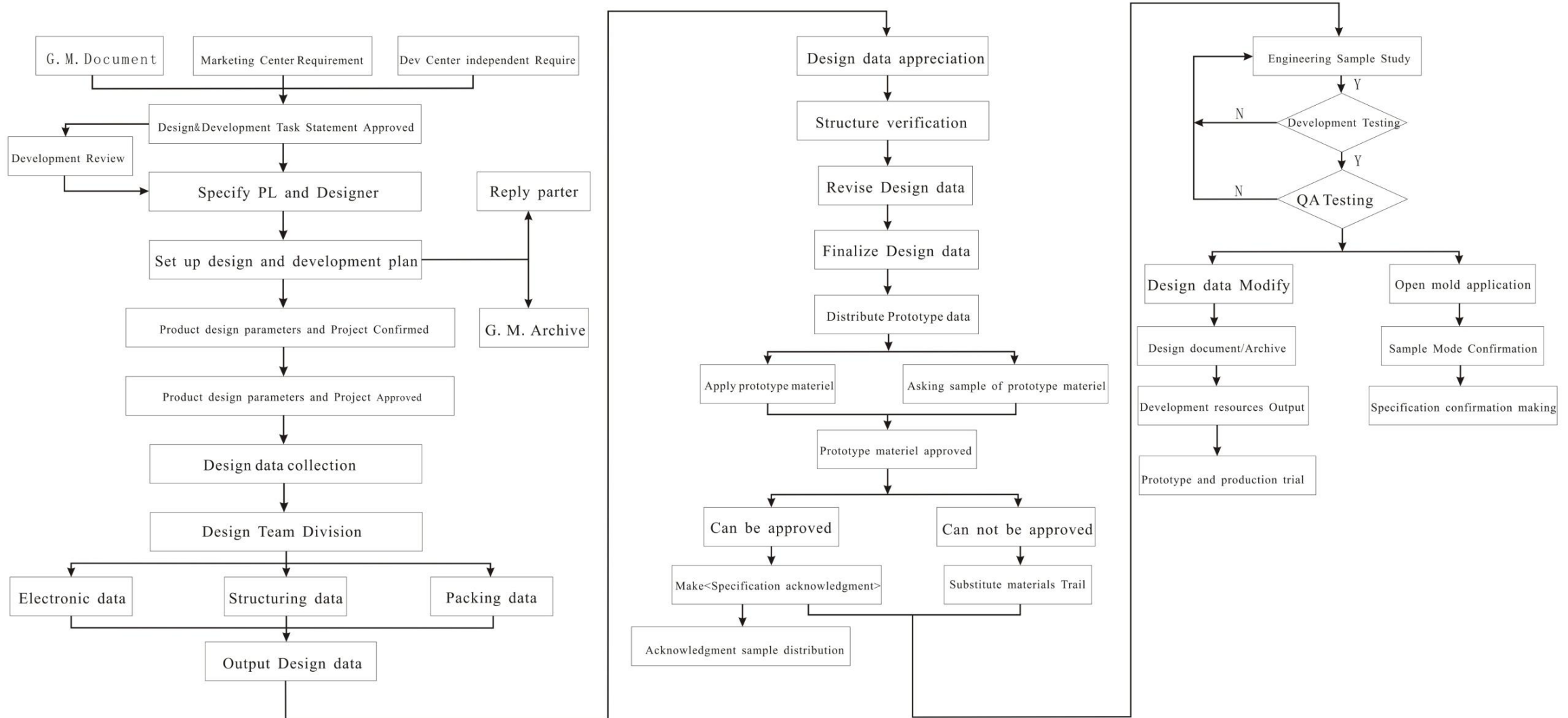
We have strict control for new product R&D

Firstly, the market dept to make new product after market research. And then talk with engineer for the new function. Finally, the all talkings collected to document, the manager will have a meeting to start the project

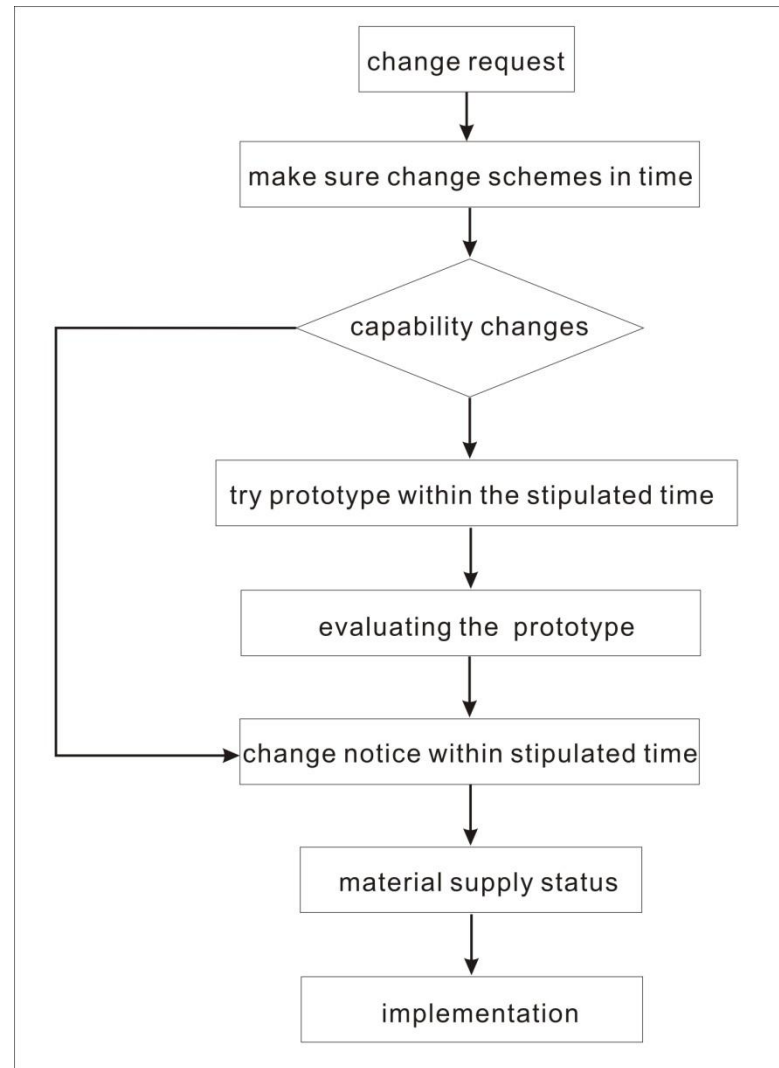
Technoly department will finish the R&D product document, and after the confirm the data, the spec. by R&D department. It will be archived.



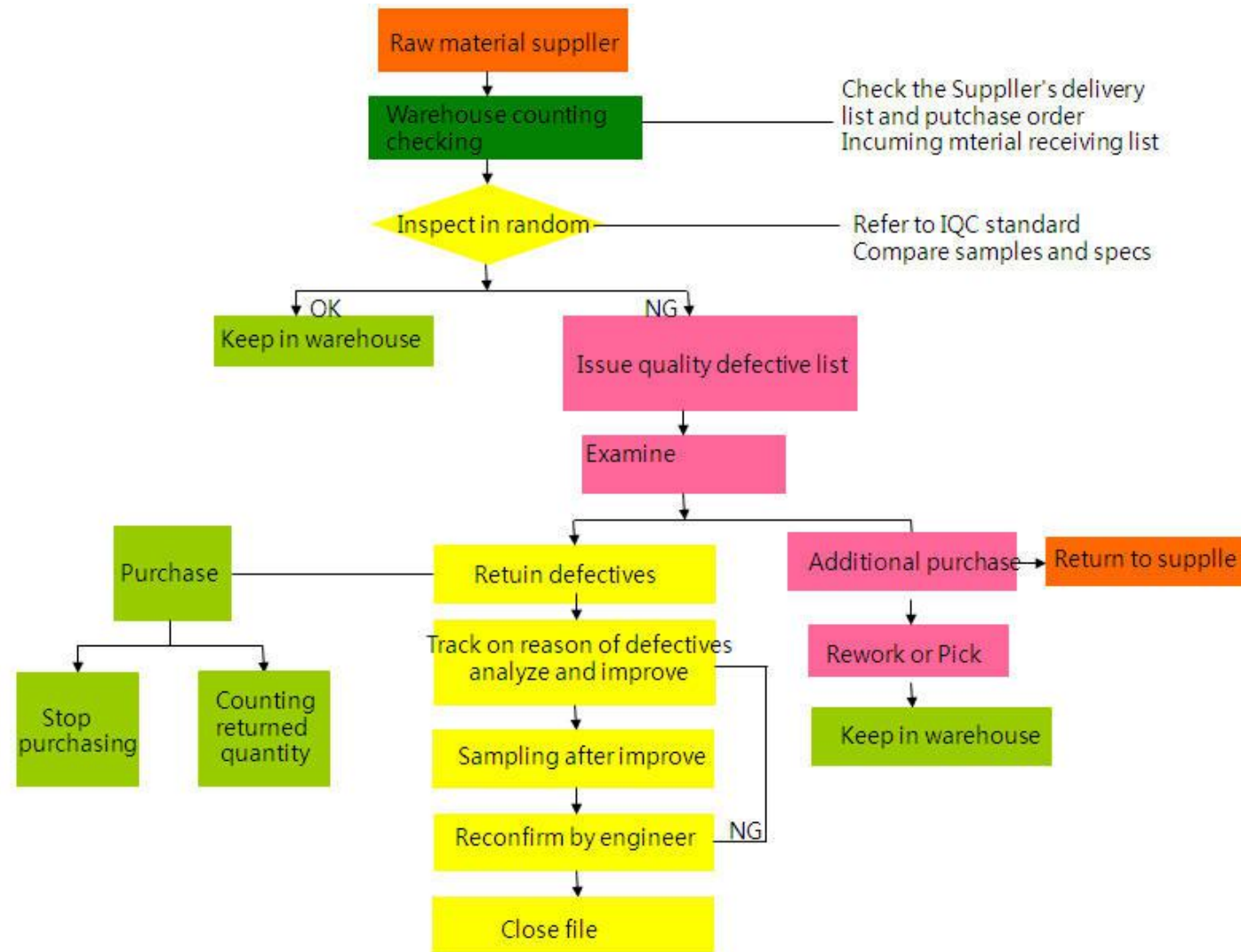
2.4.2 Key Progress-R&D Product Progress



Production



2.4.4 Key Progress-Material Management



We have worked on measures on the cost control, reduce cost plan and implementation inspection.

1. Raw material control
2. Labor cost control
3. Production cost control
4. Defective products control
5. Other cost control

To improve and enhance our competitive, we focus more on the efficiency, management, environment protection.



To make sure the order delivery on time, we have series protection actions:

1. Full preparation, checking stock schedule
2. Arrange the produce plan
3. Certain quantity stock
4. Necessary contingency plan
5. Control the new product R&D



Company always care about environmental protection and give top priority to use environmental-friendly material. Without environment, it means nothing.

All of our products according to RoHs, all the material under RoHs standard or have environmental commitment.



Testing before delivery

- 1 Vibration Test vertical&horizontal vibration, Sine、Random、Sine+Random
- 2 Mechanical Shock Test 5000m/s² (500g)
- 3 Collision Test 250kg, 50m/s² ~ 300m/s²
- 4 Packing Drop Drop Gesture: Angle、Corner、Surface
- 5 PoE emulation Transportation Tertiary Highway: 35km/h(140/h)Max Load: 1500kg
- 6 Compressive Strength Max Pressure: 5吨ton
- 7 IP Range Dustproof IP1Y ~ IP6Y
 waterproof IPX1 ~ IPX8
- 8 Stack Test Max Load: 5 tons
 Temperature -40°C--85°C
- 10 Salt-fog Test NSS、AA SS、CA SS
- 11 Gas Corrosion SO₂/H₂S/CO₂
- 12 Constant Temp&Hum. 20°C~95°C, 5 ~ 98%RH

Company EC Management Content:

Ø Design Change Management;

Sign PCN protocol with customer, and fill in PCN application form in time if any changes of internal and external.

Ø Progress Change Management;

Sign PCN protocol with customer, fill in PCN application form in time if any changes in the manufacture progress

Ø Other Changes Management

1. Order item change

2. Datasheet change

3. Appearance, Package change

4. Function and performance update, modify

5. Material spec. or manufacturer change

6. Stop production or product update

7. Manufacturer change should be do notice 3 months earlier

8. Other business, function changes



Product

- 3.1 IEEE802.3af/at PoE Injector
- 3.2 High power PoE Injector
- 3.3 Surge protection PoE Injector
- 3.4 Fiber PoE Converter
- 3.5 Outdoor PoE Injector
- 3.6 Outdoor PoE Switch
- 3.7 Industrial PoE Injector
- 3.8 DIN Rail PoE series
- 3.9 24V PoE Injector
- 3.10 Accessories-PoE Lightning protector & Extender
- 3.11 Accessories- PoE Splitter

Feature

- Output voltage 48VDC or 55VDC
- Output power 15.4W/30W
- 10/100/1000Mbps
- Power pin: 4/5(+),7/8(-)
or 3/6(+),1/2(-)
- IEEE802.3af compliant
- IEEE802.3at compliant
- RoHS Compliant
- WEEE Compliant
- CE, FCC certificate
- Passive, active optional



Wall-plug series



Passive Series



Active Series



Multi-port Series

Features

- Single port PoE injector
- Output Voltage: 55Vdc
- Output Power:
60W/75W/95W/120W/160W
- 10/100/1000Mbps
- Power pin: 4/5(+), 7/8(-)
and 3/6(+), 1/2(-)
- IEEE802.3af compliance
- IEEE802.3at compliance
- RoHS Compliant
- WEEE Compliant
- CE, FCC, UL, CUL, PSE, BIS,
SAA, KCC certification
- AC, DC input optional
- Passive, active optional



60W series



75W series



95W series



120W series

3.3 Surge Protection PoE Injector

Features

- Single port PoE injector
- 6KV(10/700μs) on PoE port
- Work Temperature: -40°C to 65°C
- 10/100/1000Mbps
- Protection line: 1, 2, 3, 4, 5, 6, 7, 8
- IEC61312-3
- GB/T17626.5-2008
- IEC61000-4-5:2005
- YD/T993-2006
- YD5098-2005
- CE, FCC, UL, CUL, PSE, BIS, SAA, KCC certification
- AC surge protection optional



Features

- 1 SFP port
- Output power: 30W/60W/95W
- 10/100/1000Mbps
- Working temperature: -40 to 65°C
- 6KV(10/700μs) surge protection on PoE port
- IEEE802.3af compliance
- IEEE802.3at compliance
- RoHS Compliant
- WEEE Compliant
- Data interconnectivity among SFP, LAN, PoE



Feature

- Single port PoE injector
- Output power: 30W/60W/95W
- 6KV(10/700μs) surge protection on LAN, AC, PoE
- Working temperature: -40 to 65 °C
- Protection level: IP67
- 10/100/1000Mbps
- IEEE802.3af compliance
- IEEE802.3at compliance
- RoHS Compliant
- WEEE Compliant
- CE, FCC certificate
- AC, DC is optional



30W



60W



95W



Installation Kit

3.6 Outdoor PoE Switch

Feature

- Output power: 30W/60W
- 3 PoE output ports
- 10/100/1000Mbps
- 6KV(10/700μs) surge protection on LAN, AC, PoE ports
- Working temperature: -40 to 65°C
- Protection level: IP67
- IEEE802.3af compliance
- IEEE802.3at compliance
- RoHS Compliant
- WEEE Compliant
- No need open units when install



AC Input PoE switch



AC&SFP PoE switch

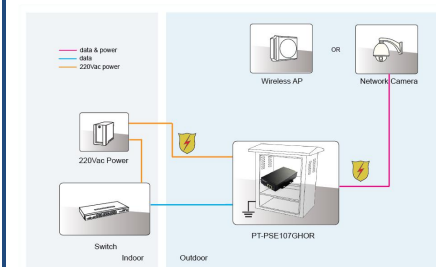


PoE input PoE Switch

3.7 Industrial PoE Injector

Feature

- Input voltage: 12-24Vdc or 44-57Vdc
- Output voltage: 55Vdc
- Output power: 30W/60W/95W
- 10/100/1000Mbps
- 6KV(10/700 μ s) surge protection on PoE port
- working temperature: -40 to 65°C
- RoHS Compliant
- WEEE Compliant



Feature

- Input voltage: 12-24Vdc or 44-57Vdc
- Output voltage: 55Vdc
- Output power: 30W/60W/95W
- 10/100/1000Mbps
- 6KV(10/700μs) surge protection on PoE port
- working temperature: -40 to 65°C
- RoHS Compliant
- WEEE Compliant



3.9 24V PoE Injector

Feature

- Single port PoE injector
- Input Voltage: 100-240Vac
- Output voltage: 24Vdc
- Output Power: 26.4W
- 10/100/1000Mbps
- Power pin: 4/5+, 7/8-



Product

3.10 Accessories-PoE Lightning Protector & Extender

Feature

- Aluminum alloy shell
- Working temperature: -40 to 65°C
- Operating Voltage :44-57Vdc, (Max 60Vdc)
- Surge protection
- IEEE802.3af compliance
- IEEE802.3at compliance
- 10/100/1000Mbps



Indoor PoE arrester



Outdoor PoE Arrester



Indoor PoE Extender



Outdoor PoE Extender

Feature

- Plastic shell, Metal shell
- Input Voltage : 36-57Vdc,
40-57Vdc
- Output Voltage : 5/9/12/24V
- IEEE802.3af compliance
- IEEE802.3at compliance
- 10/100/1000Mbps



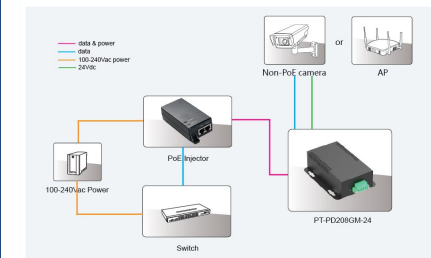
802.3af PoE Splitter



802.3af/at PoE Splitter



51/84W PoE Splitter





Customer

4.1 Sales performance

4.2 Product Using

4.3 Cooperator

2017sales

- 2017 : USD6,800,000
- Selling Qty: 250,000PCS



Application

- Supply power for wireless network devices
- Supply power for network cameras , IP Phones and network PoE PDs



Working environment

- Indoor: 85%
- Outdoor: 15%
- Lightning Area: 22%
- Cold Area: 20%

FIELD FAILURE RATE

- Average: 1‰
- Outdoor: 1.8‰
- Lightning: 1.5‰
- Cold : 1.4‰



4.3 Cooperator



International well known security industry company
www.hanwha.com



Leading provider of innovative security products and solutions
<http://www.hikvision.com>



Leader in Digital Solutions
<http://www.h3c.com>

4.3 Cooperator



Digital center/Security system/Surveillance
<http://www.assmann.com/>



International giant telecom device supplier
<http://www.zte.com.cn>



Integrated communication device supplier
<http://www.potevio.com>

4.3 Cooperator



Service system/Industrial application/Satellite system
<https://www.viasat.com/>



Microwave system/Network application/Network management
<http://www.siaemic.com>

das microelectronica



International telecom system solution supplier
<http://www.intracom-telecom.com>

Thank You

<http://www.poesystem.com>
<http://www.procet.cn>

Ver4.0

01/Feb/2018
